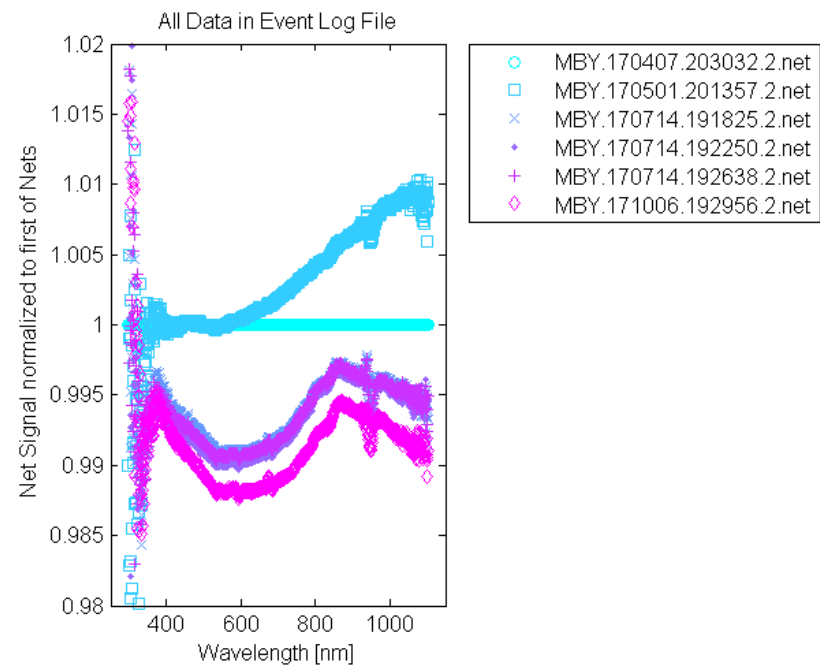
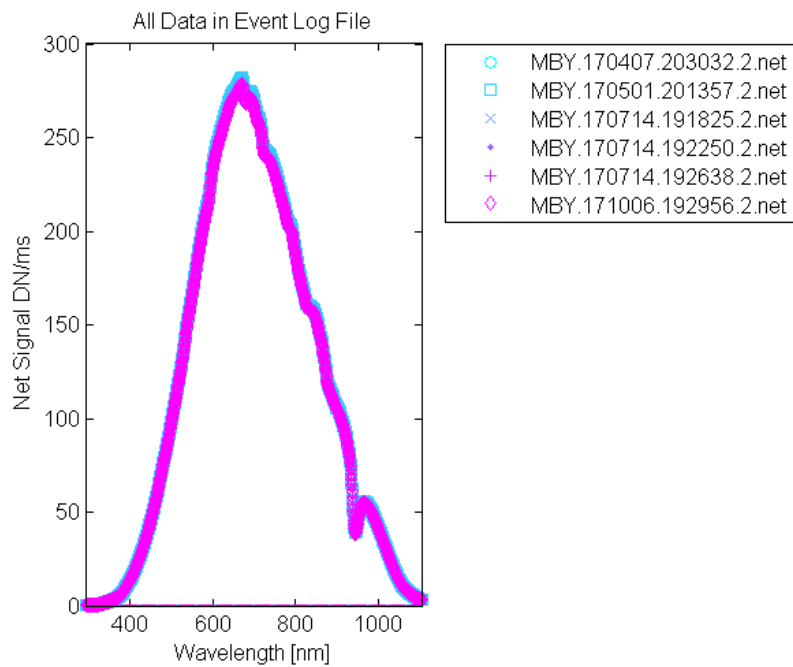
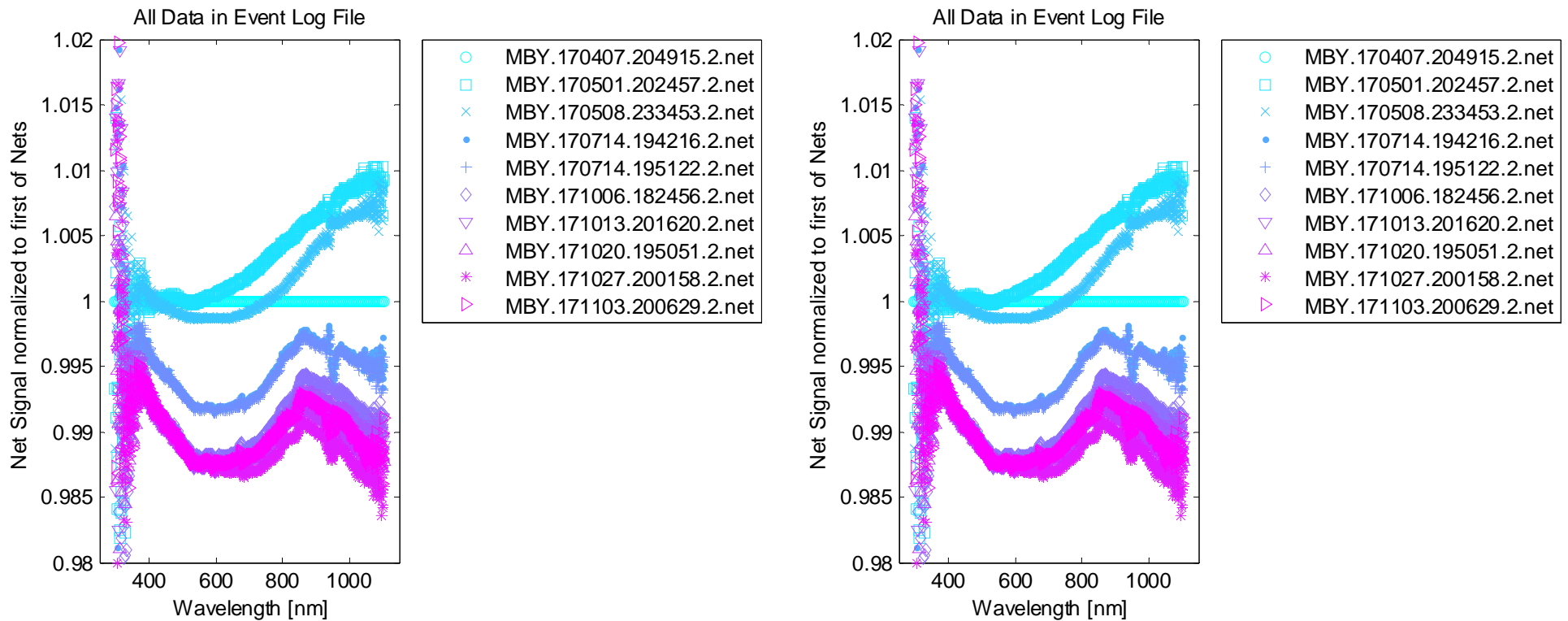


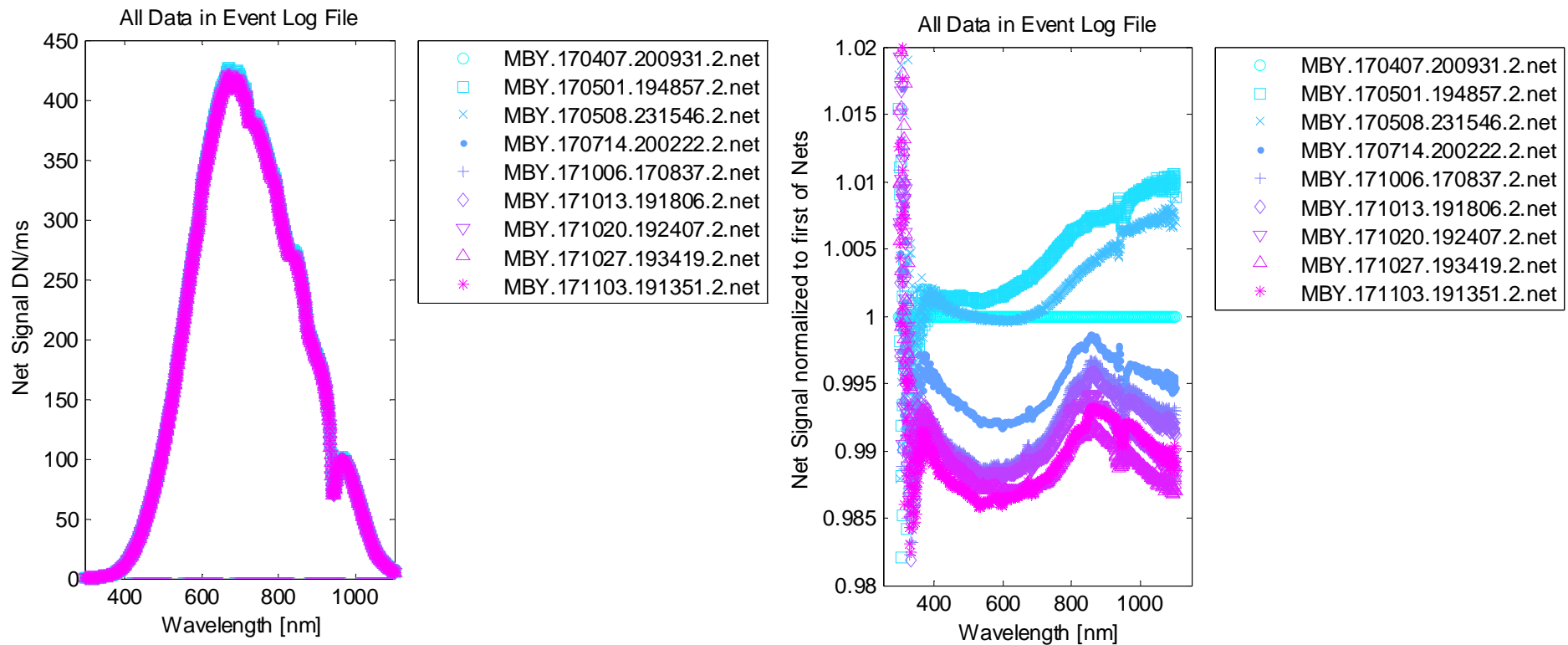
CAS observing the SQM HI (d=0) after 22-Mar-2017; OD 1 CAS internal filter



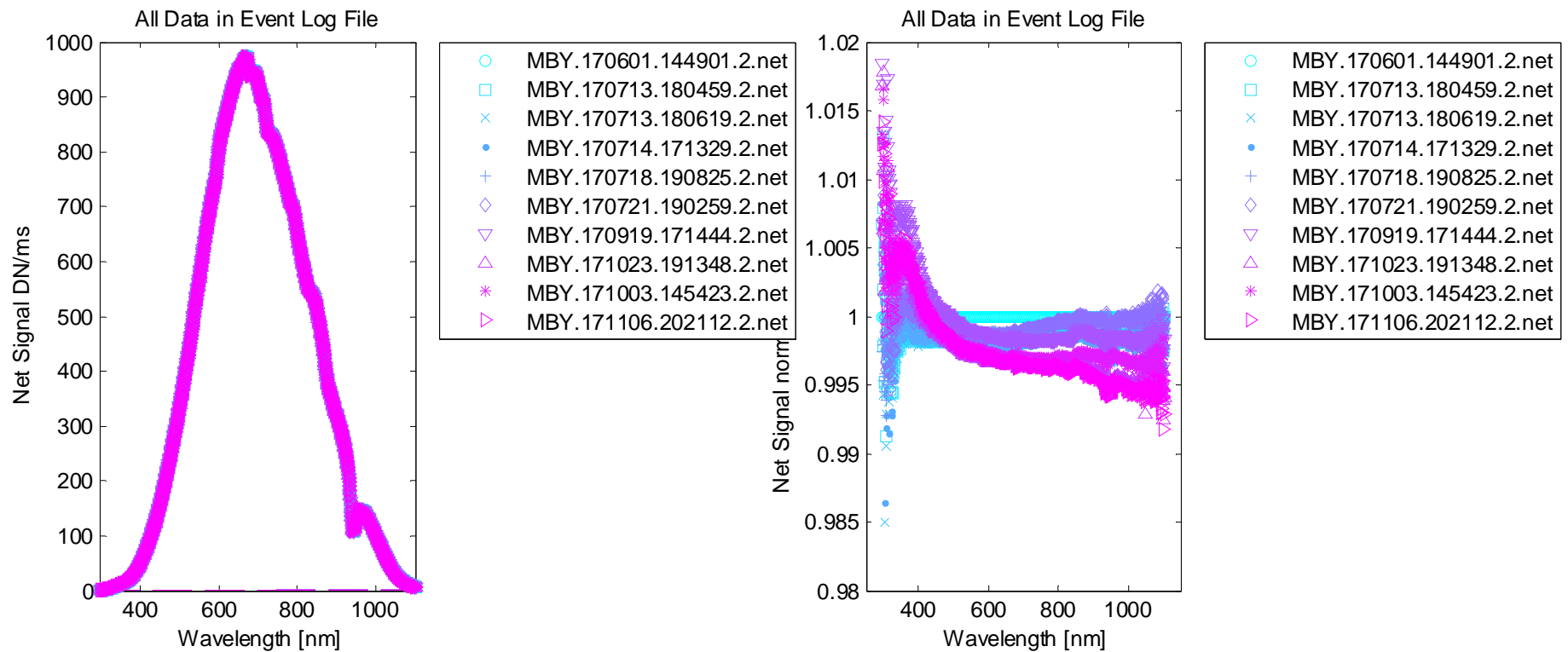
CAS observing the SQM MED (d=0) after 22-Mar-2017; OD 1 CAS internal filter



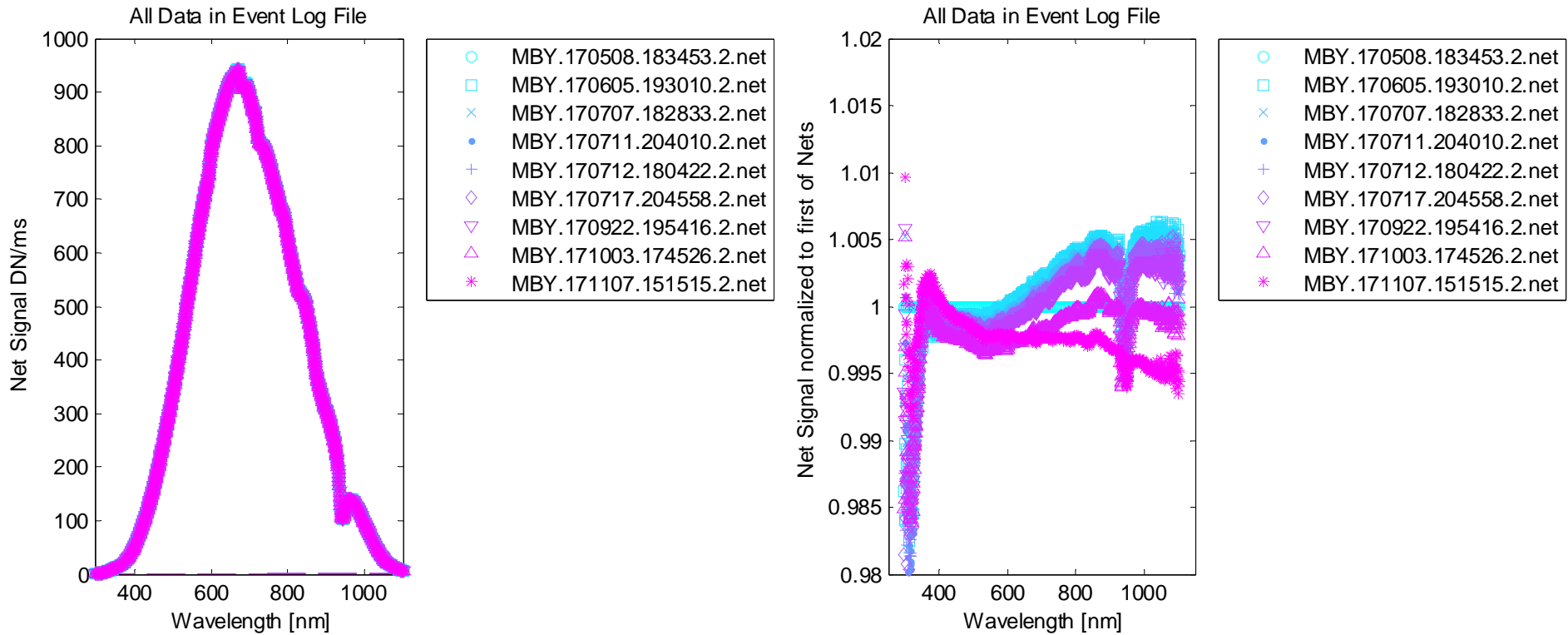
CAS observing the SQM LO (d=0) after 22-Mar-2017; no CAS internal filter

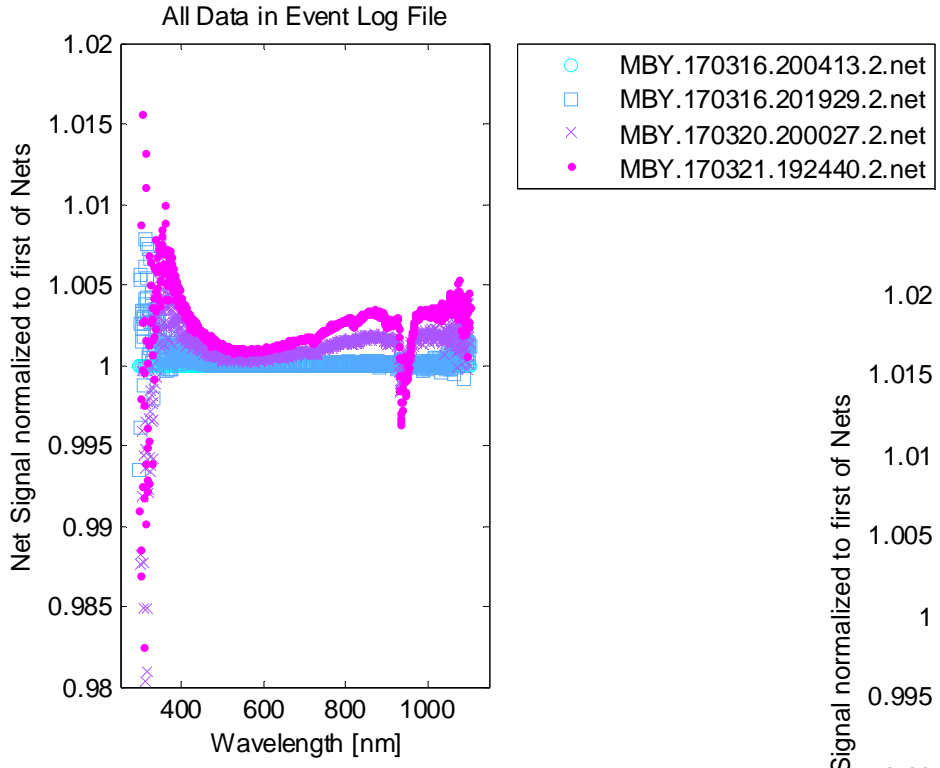


CAS observing the NPR; OD 2 internal CAS filter



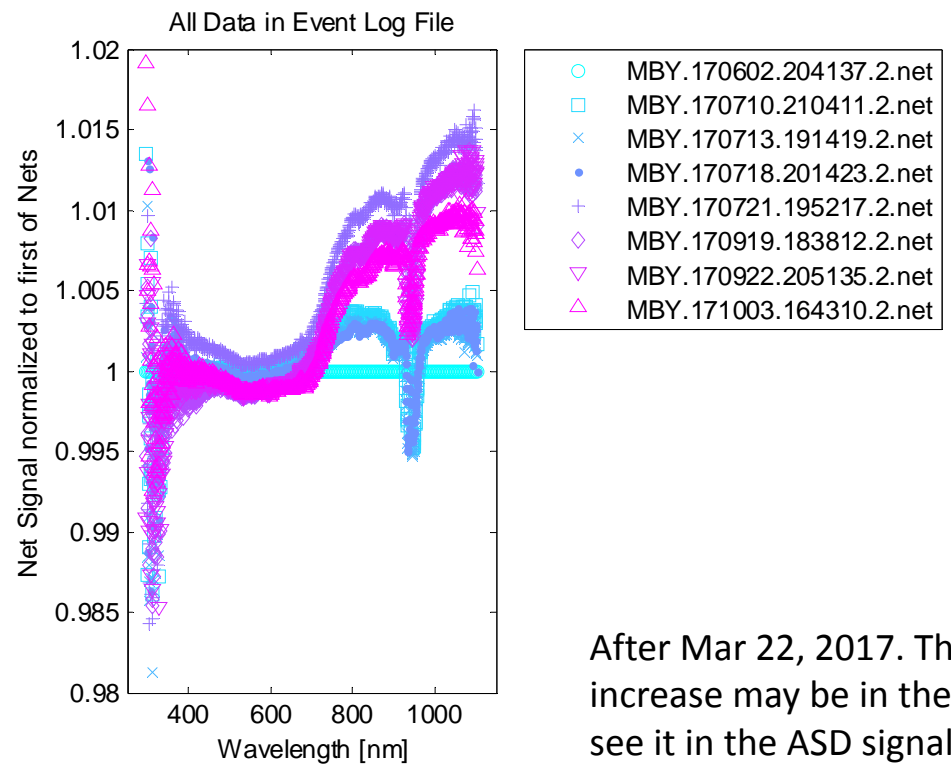
CAS observing the NII; OD 2 internal CAS filter





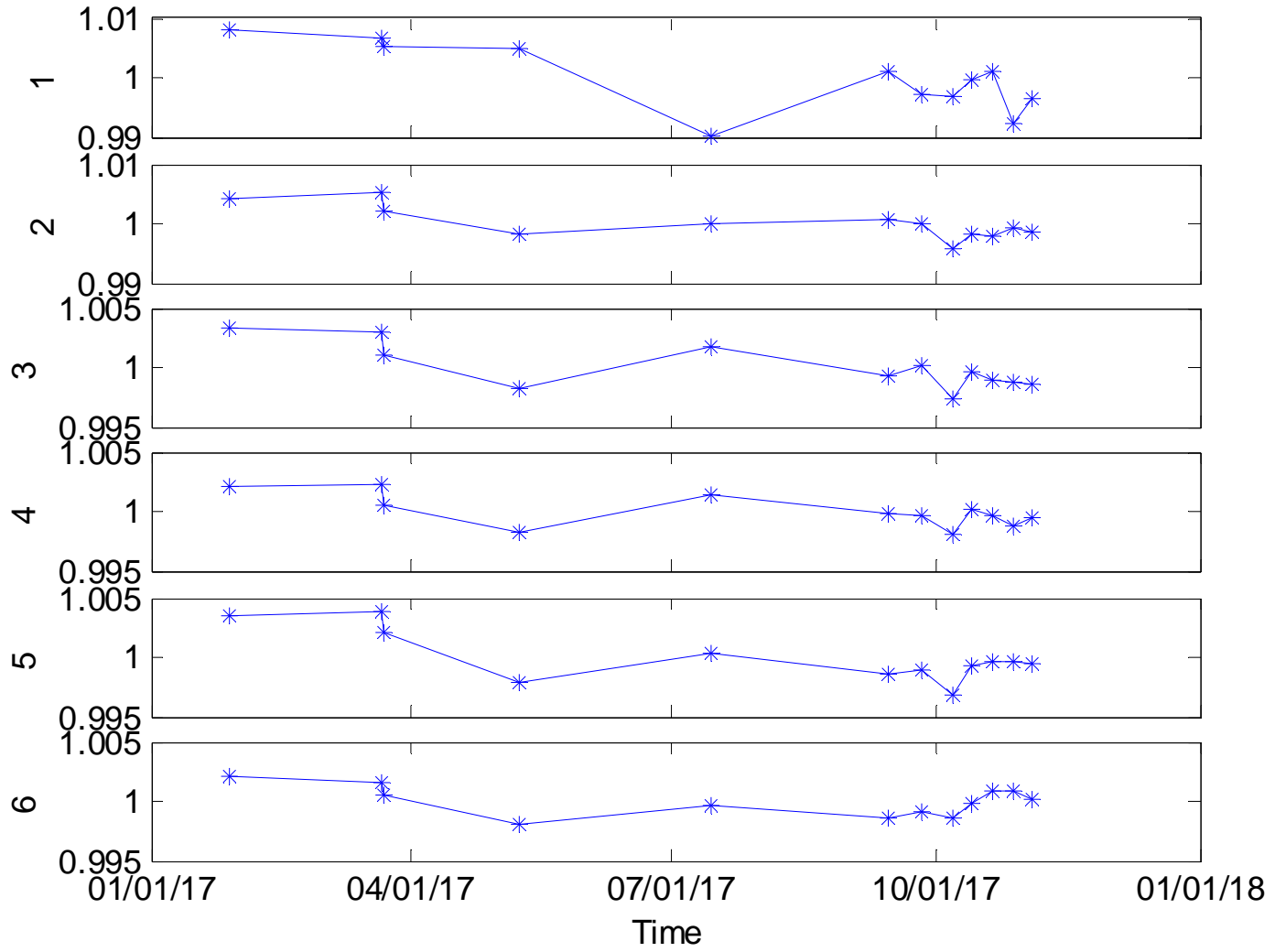
Before Mar 22, 2017

OL455-12

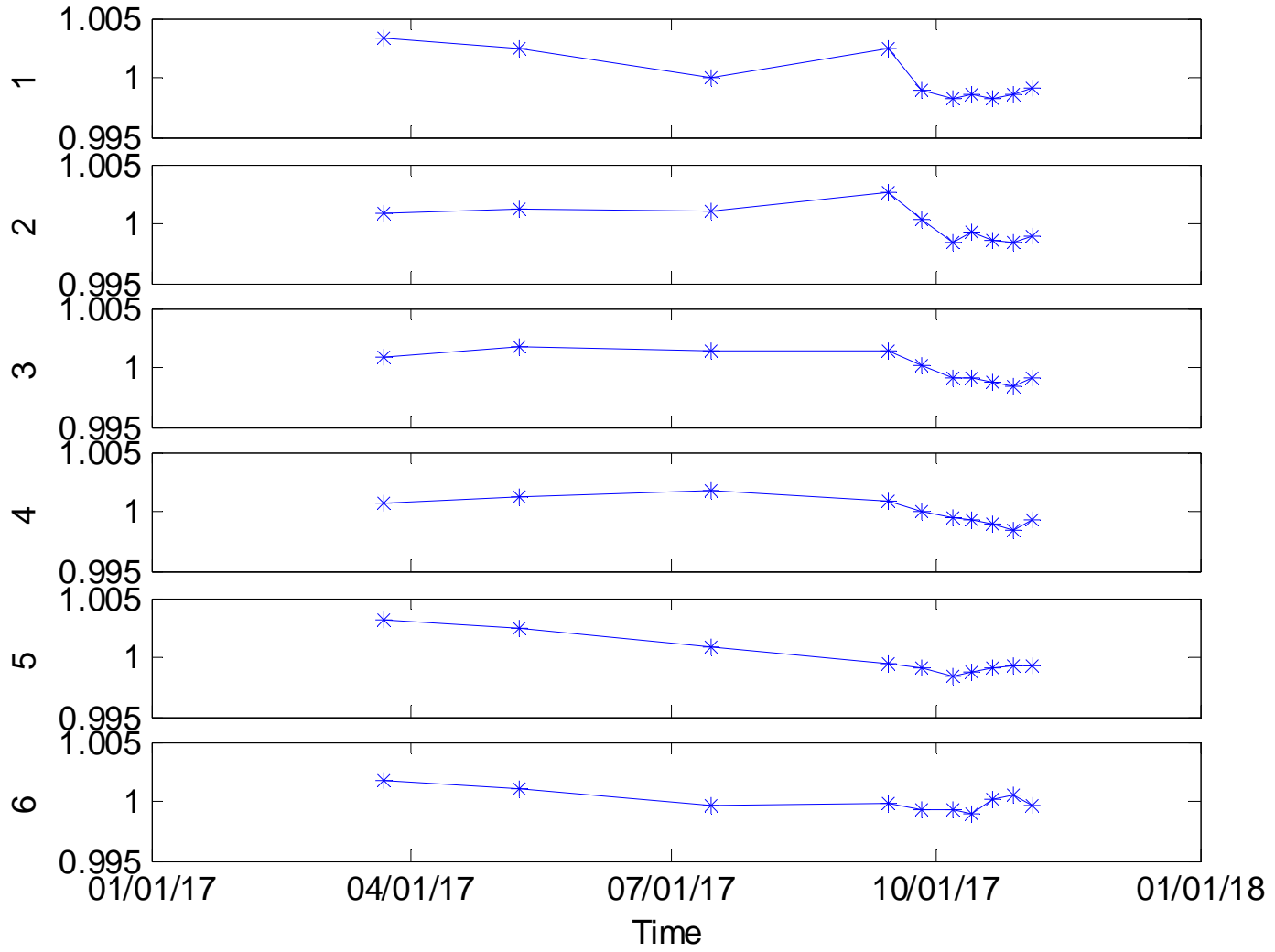


After Mar 22, 2017. The NIR increase may be in the OL455, we see it in the ASD signals as well.

Source = SQM LO



Source = SQM MED



Source = SQM HI

